

LAL GUMBAD, SOHNA, GURUGRAM

Lal Gumbad 1475-1525 CE

Monument

The tomb complex locally known as "Lal Gumbad" consists of Lodi period twin tomb and a single tomb. The red sandstone columns of the porch of twin tomb are responsible for its local name 'Lal Gumbad'. Twin tomb is a rectangular structure consisting of two square tombs. A porch projects from one of the tombs. Porch is composed of columns supporting a ribbed domical roof resting on an octagonal drum.

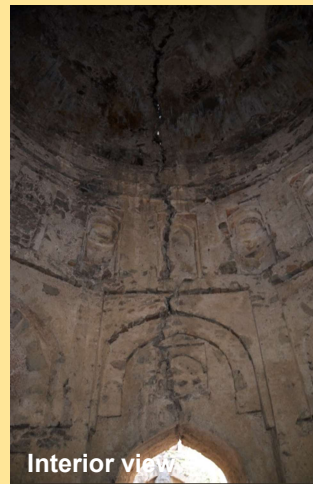
The first tomb has three arched openings; one opening into porch, the second directly outside and the third leading to the other tomb. Like the first tomb, the other tomb also has three openings, two leading to the outside and the third leading to former.



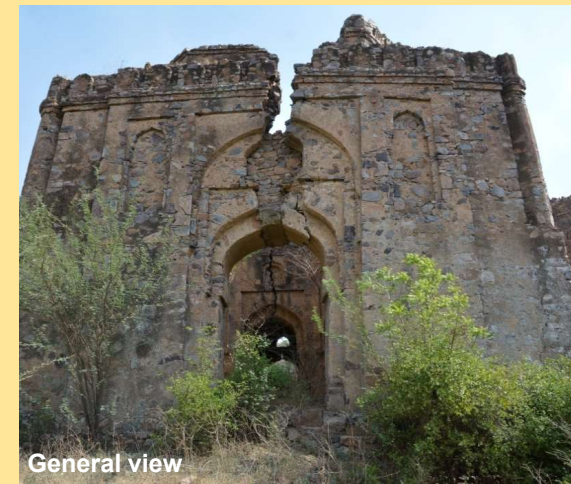
General view



General view



Interior view



General view



General view